

# COMPLIANCE ASPEKTE

Release Notes 9.4

## Contents

Major Features.....	3
1. AI knowledge management assistant .....	3
2. Key Performance Indicators (KPIs) .....	3
3. Risk Analysis dashboard .....	4
4. Export TISAX® assessment results .....	6
5. Custom fields for specific Profile objects.....	7
6. Custom fields improvements .....	8
6.1. Read-only custom fields .....	8
6.2. Hidden custom fields.....	8
7. Reminder repeatability .....	8
8. Embedded Concept Template for Universities.....	9
9. Document generation in Compliance Check and Risk Analysis .....	10
10. New and updated Standards .....	10
11. Resolved vulnerabilities .....	11
Other improvements .....	11
1. Enhanced Helga Features: Magic Assets .....	11
2. Attachments for comments .....	12
3. Bulk documents attachments.....	12
4. Color picker for subtypes .....	12
5. Hot-key to select next object in trees.....	13
Bug Fixing .....	13

## Release 9.4 Summary

Compliance Aspekte version 9.4 brings major updates, such as knowledge management through chat, refined KPIs, and improvements to custom fields and more.

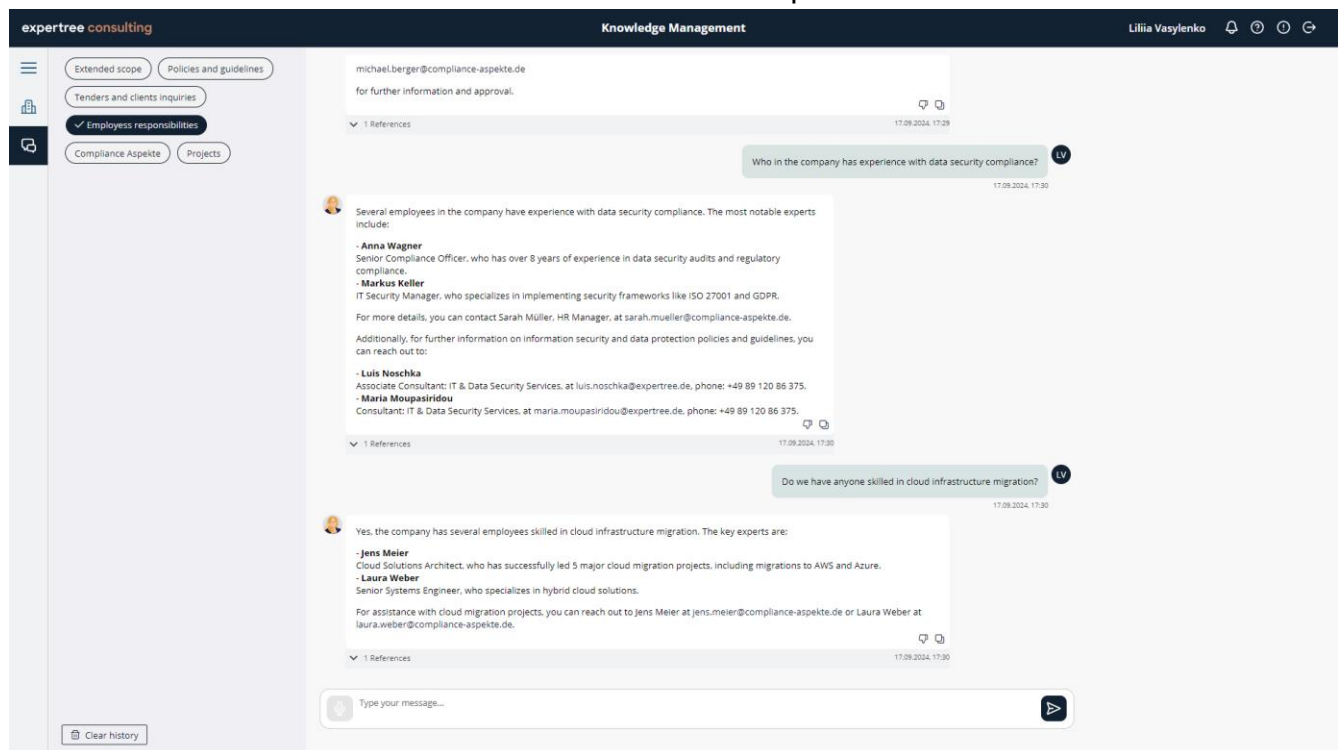
## Major Features

### 1. AI knowledge management assistant

Compliance Aspekte introduces the new AI knowledge management assistant feature, designed to elevate your experience with comprehensive information retrieval and decision support.

This feature enhances the way users interact with their assets by allowing them to attach documents and receive answers based on the content of those documents.

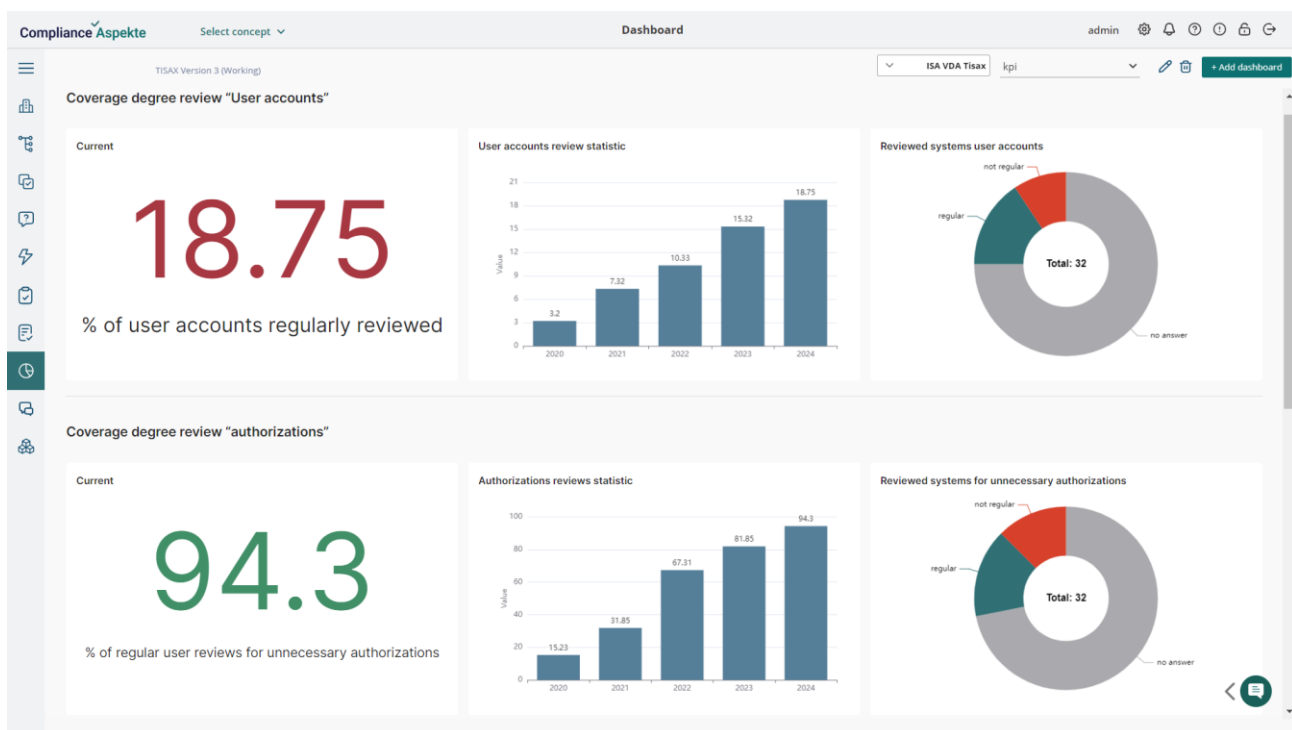
- **Enhanced Asset Utilization:** Users can now leverage attached documents to gain deeper insights and answers directly related to the content from those documents.
- **Streamlined Workflow:** Simplifies the process of accessing and utilizing information stored in attached documents without leaving the platform.
- **Improved Decision-Making:** Facilitates informed decision-making by providing accurate and contextual answers based on the uploaded documents.



### 2. Key Performance Indicators (KPIs)

Compliance Aspekte 9.4 introduces Key Performance Indicators (KPIs) feature designed to provide deeper insights and improved tracking capabilities for organizations' success metrics. This update includes significant enhancements to empower users in monitoring and optimizing performance effectively.

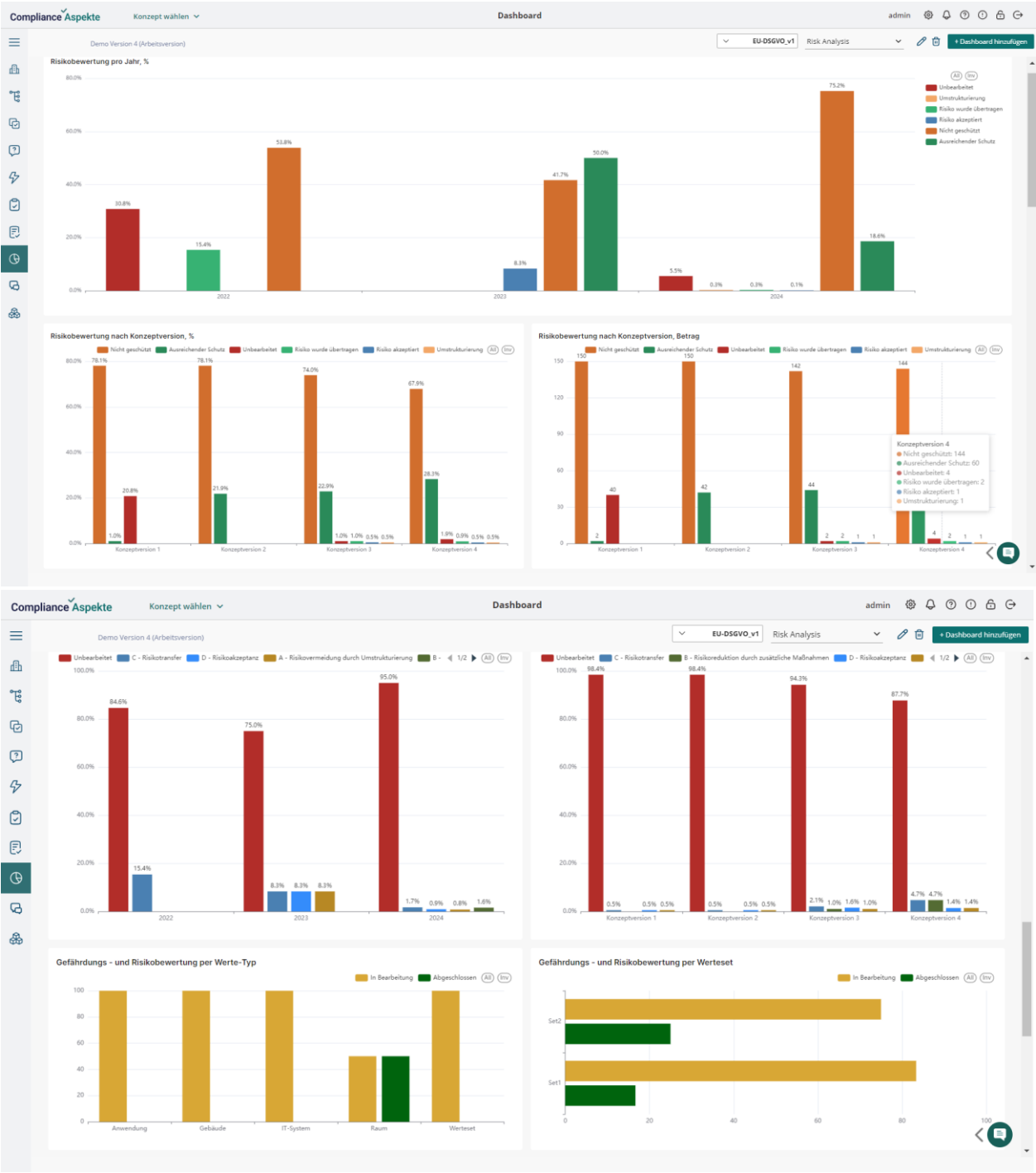
- 1. Expanded Metrics Visibility:** Gain comprehensive visibility into crucial performance metrics across various departments or projects. The dashboard enables easy tracking of KPIs such as employee awareness, operational efficiency, and customer satisfaction, helping you prioritize and monitor critical metrics effectively.
- 2. Improved Decision-Making:** Access real-time data and insights to make informed decisions promptly.
- 3. Efficient Monitoring:** Monitor performance against targets and thresholds with ease.
- 4. Planning:** Schedule your KPIs every day, month or annually.

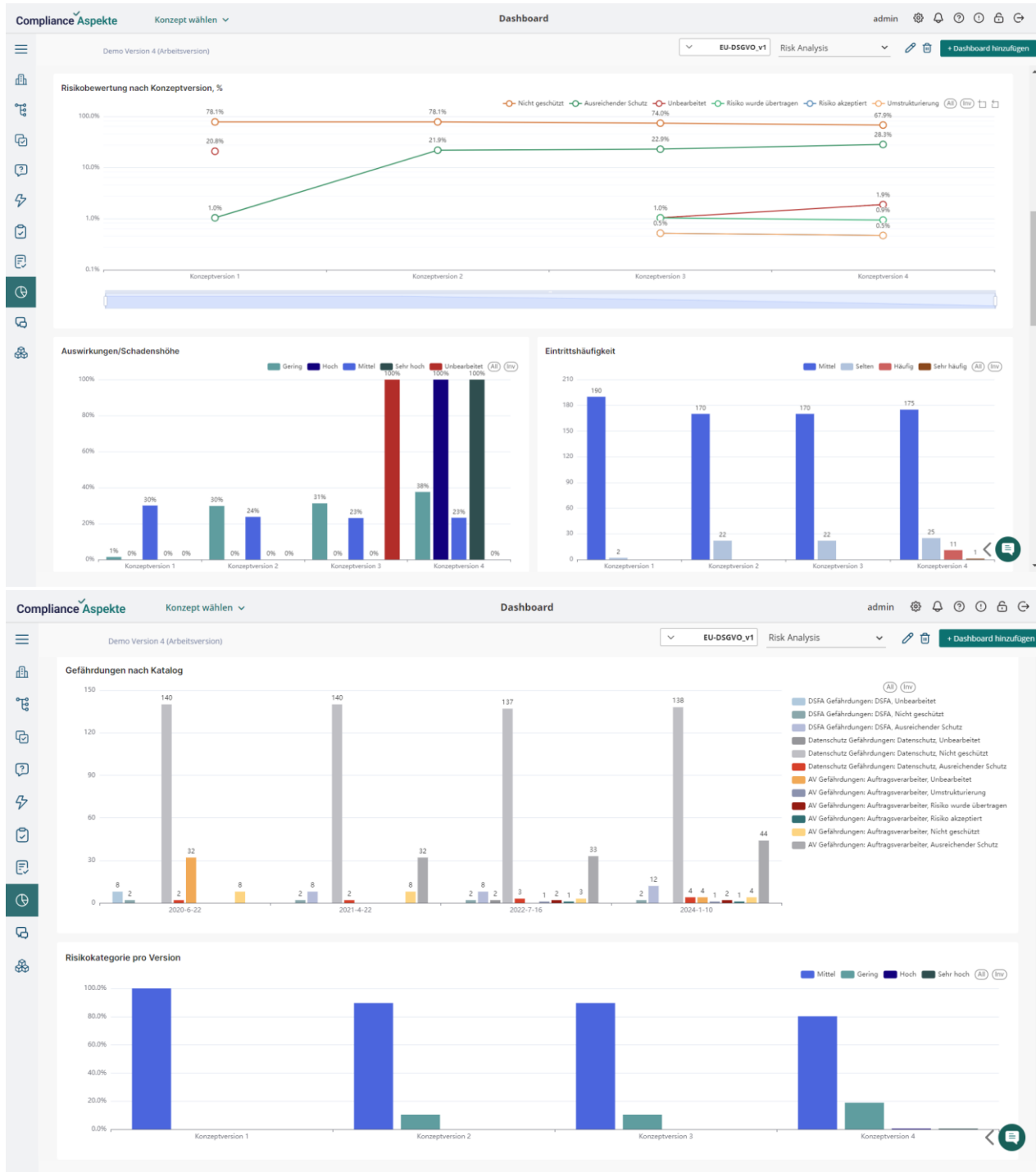


### 3. Risk Analysis dashboard

Compliance Aspekte provides the new Risk Analysis Dashboard, powered by Superset, a robust and versatile analytics tool designed to provide deep insights into your risk management processes.

It allows visualizing and analyzing risk data with dynamic and interactive dashboards in real-time.

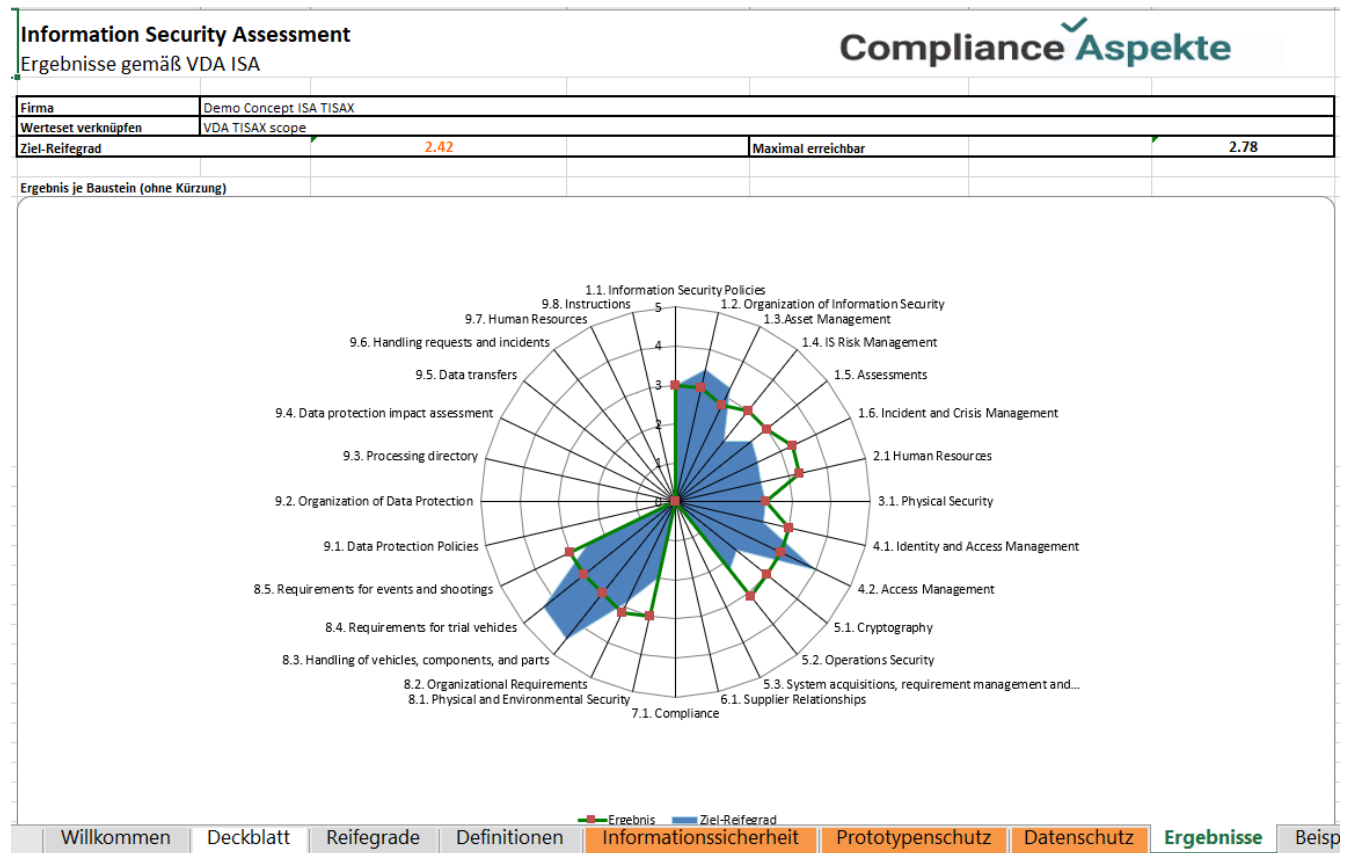




## 4. Export TISAX® assessment results

The Export TISAX® assessment results feature, designed to streamline compliance reporting and enhance data security within your organization. This feature empowers users to export

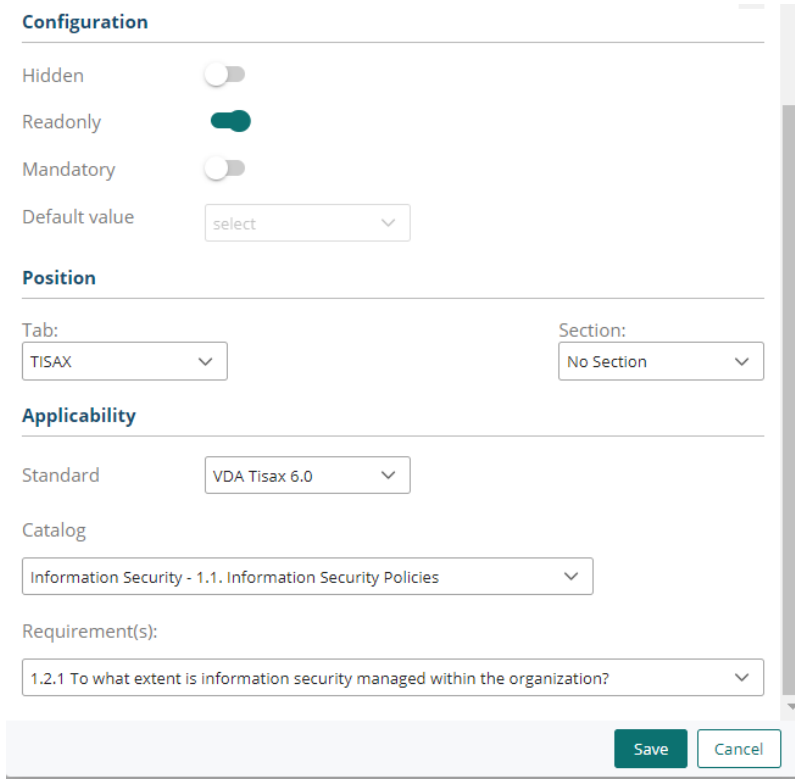
TISAX® (Trusted Information Security Assessment Exchange) results conveniently, ensuring seamless integration with TISAX compliance workflows.



## 5. Custom fields for specific Profile objects

Compliance Aspekte provides possibility to use / create custom fields for specific Profile objects – Modules, Requirements, Threats and Controls. This new feature empowers users to tailor profile information by adding and managing custom fields that are specific to their needs, providing enhanced flexibility and personalization.

Users can now create custom fields for different Profile objects. This includes text fields, dropdowns, checkboxes, and date pickers. Custom fields can be tailored to fit specific data requirements or use cases.



**Configuration**

Hidden ☐

Readonly ☒

Mandatory ☐

Default value

**Position**

Tab:  Section:

**Applicability**

Standard

Catalog

Requirement(s):

## 6. Custom fields improvements

### 6.1. Read-only custom fields

This feature allows designating of specific custom fields as read-only, ensuring that their values remain unchanged by end-users.

### 6.2. Hidden custom fields

This new functionality allows users to hide custom fields from user views while still retaining their data for backend processes and integrations to ensure critical or technical information is kept secure and out of sight while still being functional.

## 7. Reminder repeatability

This feature allows reminders to automatically recur at customizable intervals, ensuring you never miss an important task or deadline.


Available Repeat Intervals:


- **Every Month:** Set reminders to recur monthly, perfect for regular monthly tasks or reviews.



- **Every Half-Year:** Schedule reminders to repeat every six months for semi-annual tasks or check-ins.
- **Every Year:** Configure annual reminders for yearly reviews, birthdays, or other significant events.

**Reminder**




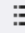



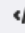
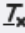
Repeat: Never 

Reminder occurrence: Never 

Send on email:

Reset evaluation: Once

Message: 

Normal Sans Serif B I U A         

## 8. Embedded Concept Template for Universities


Compliance Aspekte 9.4 provides the possibility to create a Concept Template for universities. This template is based on four standards:

- IT-Grundschutz-Profil for Universities
- IT-Grundschutz 2023
- GDPR
- 200-4 BCM Requirements catalogues

**Get started with Compliance Aspekte**

You can start by creating a new and empty Concept or get an idea with the predefined Demo Concept.

☐ New Concept

☒ Concept Template Select template 

**RECPLAST**

Master für Hochschulen Grundschutzprofil

**Create** **Cancel**

## 9. Document generation in Compliance Check and Risk Analysis

Compliance Aspekte offers powerful, comprehensive and user-friendly features to simplify, optimize and automate document processes by designing compelling document templates leveraging Microsoft Word's powerful functionalities.

Documents generation based on those templates is available for Requirements, Controls and Threats in the corresponding Table views. The template contains basic data of Requirements, Controls and Threats including custom fields for those objects.

- **Name:** \${requirement&&name}
- **Standard:** \${requirement&&standard}
- **Origin:** \${requirement&&origin}
- **Realization:** \${requirement&&realisation}
- **Dispensable:** \${requirement&&dispensable}
- **Explanation:** \${requirement&&explanation}
- **Custom field:** \${requirement&&Tab for requirement&&Section for requirement&&Requirement}

## 10. New and updated Standards

### The new standards:

**CISIS12** (Compliance and information security in 12 steps) - is an Information Security Management System (ISMS) framework developed in Germany for small and medium-sized businesses. The development was driven by experienced auditors and the security cluster to meet the dynamic challenges of information and cybersecurity management. The possible software support, scientific support, the training and further education concept, and the testing procedure were also further developed.

**DIN SPAC 27076** - is a German pre-standard that provides guidelines for a standardized consulting process on IT and information security with a focus on the target group of small and micro enterprises (SMEs) that have not yet dealt with their own information security or have only done so to a very limited extent.

### Updated to the newest versions standards:

**TISAX® 6.0.3** - ISA provides the basis for self-assessment to determine the state of information security in an organization and audits performed by internal departments.

TISAX® 6.0.3 contains new controls (1.3.4, 1.6.2, 1.6.3, 5.2.8 and 5.2.9).

## 11. Resolved vulnerabilities

- **CVE-2023-36414:**

Azure Identity SDK Remote Code Execution Vulnerability

*Description:* Improper Neutralization of Special Elements used in a Command ('Command Injection').

CVSSv3: Base Score: 8.8 (High).

- **CVE-2023-36052:**

Azure CLI REST Command Information Disclosure Vulnerability

*Description:* Exposure of Private Personal Information to an Unauthorized Actor (CWE-359).

CVSSv3: Base Score: 8.6 (High).

- **CVE-2024-34447:**

Bouncy Castle - Improper Validation of Certificate with Host Mismatch

*Description:* Vulnerability related to improper validation of certificates with host mismatch.

- **CVE-2024-25710:**

Apache Commons Compress - Infinite Loop Vulnerability

*Description:* Loop with Unreachable Exit Condition ('Infinite Loop') vulnerability in Apache Commons Compress, affecting versions from 1.3 to 1.25.0.

*Recommendation:* Upgrade to version 1.26.0.

- **CVE-2023-34053:**

Spring Framework Denial-of-Service (DoS) Vulnerability

*Description:* In Spring Framework versions 6.0.0 - 6.0.13, specially crafted HTTP requests can cause a denial-of-service (DoS) condition.

*Conditions:* Affects Spring MVC or Spring WebFlux applications that use certain dependencies.

### Other improvements

#### 1. Enhanced Helga Features: Magic Assets

The "Magic Assets" feature allows users to generate new assets based on a provided description of their company structure or by utilizing attached documents that outline the desired structure:

- Generate assets effortlessly by entering a description of your company structure.
- Upload documents outlining your structure to automatically create corresponding assets.
- With the voice text functionality, users can describe their company structure verbally. Magic Assets will transcribe the voice input and generate the appropriate assets, making the process more accessible and efficient.
- Our intelligent parsing engine analyzes the provided descriptions and documents to accurately extract relevant information.
- Preview and update the generated assets before finalizing their creation.

## 2. Attachments for comments

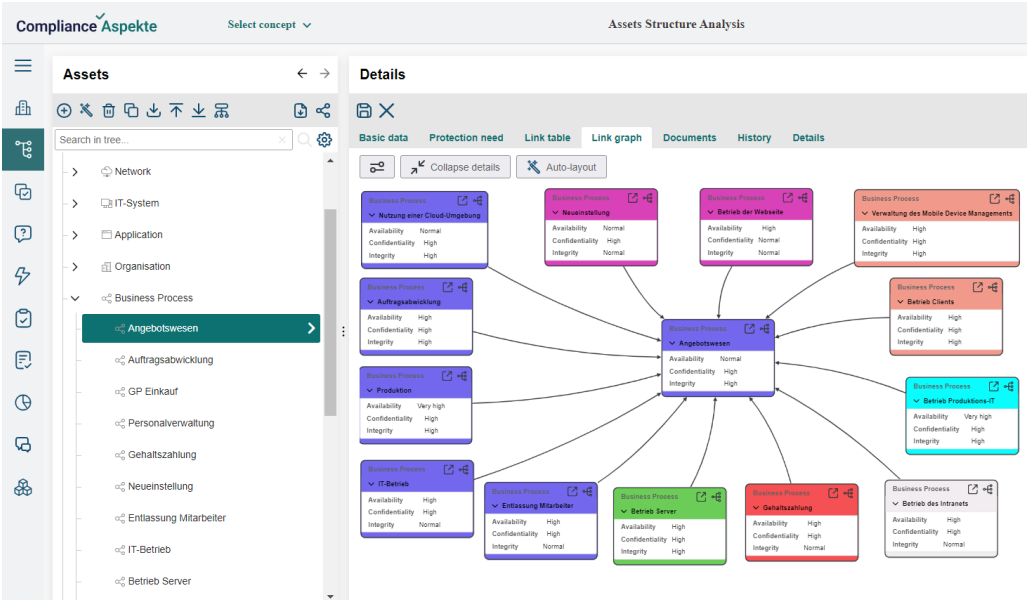
This enhancement allows users to attach files directly to comments, facilitating richer, more detailed discussions and improving overall collaboration.

## 3. Bulk documents attachments

This feature allows users to attach multiple documents simultaneously to records, saving time and improving efficiency.

## 4. Color picker for subtypes

The Color Picker for Subtypes is a new feature that allows for enhanced visual differentiation within your assets management. This update enables assigning specific colors to subtypes, providing a more colorful and intuitive way to visualize links between assets.



5. Hot-key to select next object in trees

A new improvement designed to enhance your navigation efficiency - Hot-Key to Select Next Object in Trees. Use the arrow key (Down Arrow) to move to the next object in the tree view and press 'Enter' to select the highlighted object.

Bug Fixing

Title	Description
The system required to change the password for LDAP/Entra ID users	Now the system ignores password expiration for LDAP/Entra ID (Azure AD) users and does not show notifications about it
A4 and A6 reports show responsible for Module from other Assets	Now A2 and A5 reports show responsible for Modules in context of each Asset
Wrong count for selected default values for multichoice	Wrong count for selected default values for multichoice data type of custom fields was fixed
A4 shows <null> if Requirement does not have any role	After fixing correspondent label is visible if Requirement does not have any role
Token is expired for Entra ID (Azure AD) users	After fixing Token is refreshed properly