



Infopulse  
Standards  
Compliance  
Manager

# Standards Compliance Manager

Release Notes

Version 8.4

## Contents

<b>1. Major Features</b>	<b>3</b>
<hr/>	
1.1. Automatic Migration to IT-Grundschutz 2021	3
1.2. Cross-Standard Linking of Controls	4
1.3. Multi-Concepts Dashboards	5
1.4. PIA Report	6
<b>2. Other improvements</b>	<b>7</b>
<hr/>	
2.1. LDAPS Support	7

## 1. Major Features

---

### 1.1. Automatic Migration IT-Grundschatz 2021

The Federal Office for Information Security introduced changes in the new IT-Grundschatz Compendium 2021, such as the renaming and rearranging modules and requirements and cross-module consolidation of requirements. An improved structure of the texts enables users to use the IT-Grundschatz modules even more precisely. Users of IT-Grundschatz Compendium will be ready to cover the most diverse dangers in the area of information security.

Infopulse SCM simplifies migration from Compendium 2020 to the new Compendium 2021 to their users by automatic migration features built-in in the tool.

Operational benefits	
<ul style="list-style-type: none"><li>• Automatic migration to IT-Grundschatz Compendium 2021;</li><li>• Implementation and further maintenance of ISMS based on the BSI IT-Grundschatz 2021.</li></ul>	<ul style="list-style-type: none"><li>• Successful step-by-step preparation for the audit and certification;</li><li>• Constant system updating concerning current changes.</li></ul>

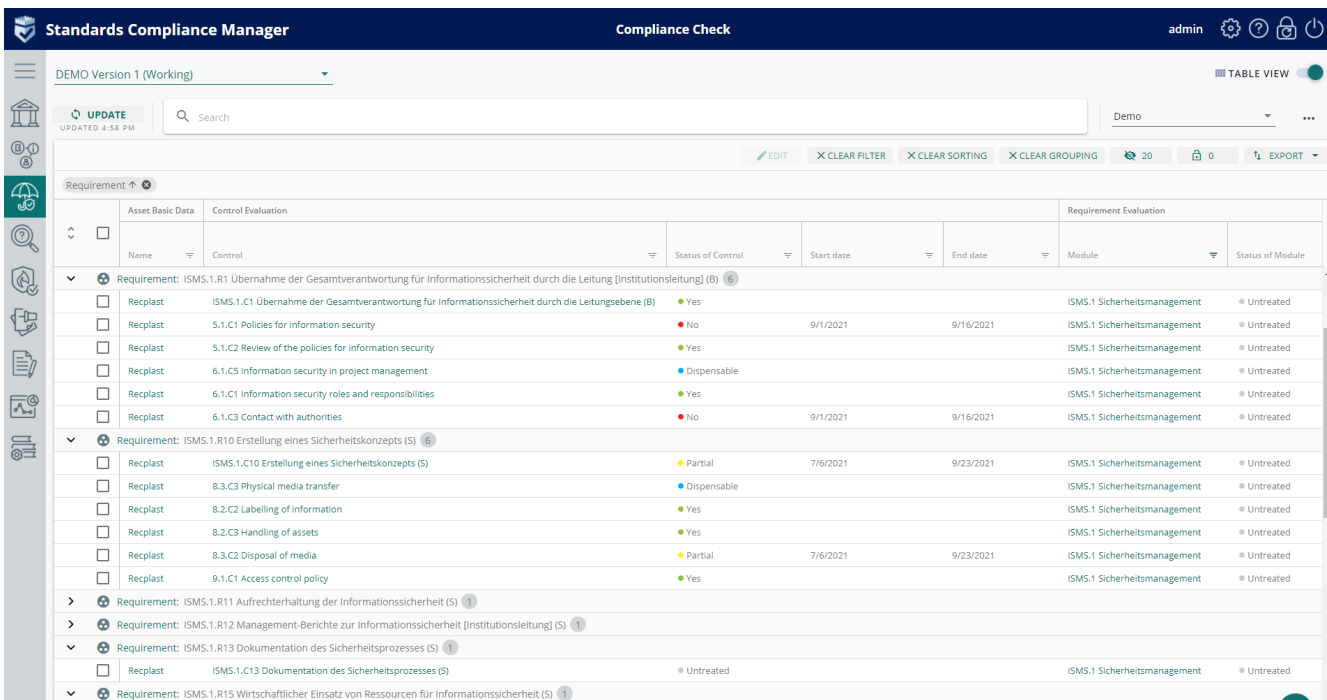
Users planning to migrate their Concept/s on a few standards to IT-Grundschatz 2021 should do it before using the feature Cross-standard Controls to prevent loss of connections after migration.

## 1.2. Cross-Standard Linking of Controls

This feature dramatically extends the flexibility of how the user manages and operates with the compliance data across the system. The 8.4 version of SCM enables users to apply common Controls to the Requirements in any standard. Once Controls for assets or processes are implemented in the organization, they can be applied to the requirements from different standards and regulations.

### Operational benefits

- Define Controls only once and map them against requirements in different standards, keep data clean & consistent;
- Get up-to-date compliance status of the assets and/or processes by inheritance of controls status.
- Combine new compliance regulation Controls with existing controls and quickly make changes;
- Structure and organize the compliance data in the best way across the standards;
- Save time, resources, and costs for data management.



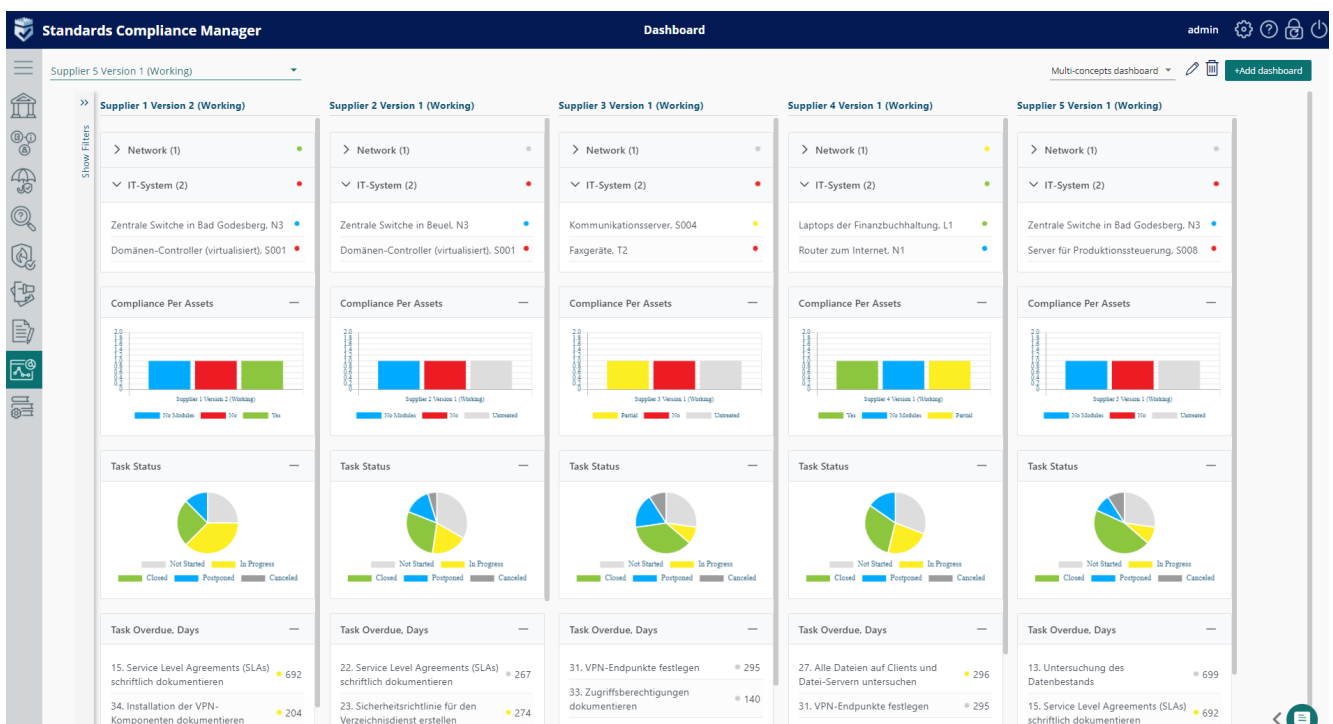
The screenshot shows the 'Standards Compliance Manager' interface with a 'Compliance Check' view. The table displays a list of requirements and their associated controls, including their status, start/end dates, and the module they belong to.

Asset Basic Data		Control Evaluation				Requirement Evaluation	
Name	Control	Status of Control	Start date	End date	Module	Status of Module	
Requirement: ISMS.1.R1 Übernahme der Gesamtverantwortung für Informationssicherheit durch die Leitung (Institutionsleitung) (B) 6							
<input type="checkbox"/>	Recplast	ISMS.1.C1 Übernahme der Gesamtverantwortung für Informationssicherheit durch die Leitungsebene (B)	Yes			ISMS.1 Sicherheitsmanagement	Untreated
<input type="checkbox"/>	Recplast	5.1.C1 Policies for information security	No	9/1/2021	9/16/2021	ISMS.1 Sicherheitsmanagement	Untreated
<input type="checkbox"/>	Recplast	5.1.C2 Review of the policies for information security	Yes			ISMS.1 Sicherheitsmanagement	Untreated
<input type="checkbox"/>	Recplast	6.1.C5 Information security in project management	Dispensable			ISMS.1 Sicherheitsmanagement	Untreated
<input type="checkbox"/>	Recplast	6.1.C1 Information security roles and responsibilities	Yes			ISMS.1 Sicherheitsmanagement	Untreated
<input type="checkbox"/>	Recplast	6.1.C3 Contact with authorities	No	9/1/2021	9/16/2021	ISMS.1 Sicherheitsmanagement	Untreated
Requirement: ISMS.1.R10 Erstellung eines Sicherheitskonzepts (S) 6							
<input type="checkbox"/>	Recplast	ISMS.1.C10 Erstellung eines Sicherheitskonzepts (S)	Partial	7/6/2021	9/23/2021	ISMS.1 Sicherheitsmanagement	Untreated
<input type="checkbox"/>	Recplast	8.3.C3 Physical media transfer	Dispensable			ISMS.1 Sicherheitsmanagement	Untreated
<input type="checkbox"/>	Recplast	8.2.C2 Labelling of information	Yes			ISMS.1 Sicherheitsmanagement	Untreated
<input type="checkbox"/>	Recplast	8.2.C3 Handling of assets	Yes			ISMS.1 Sicherheitsmanagement	Untreated
<input type="checkbox"/>	Recplast	8.3.C2 Disposal of media	Partial	7/6/2021	9/23/2021	ISMS.1 Sicherheitsmanagement	Untreated
<input type="checkbox"/>	Recplast	9.1.C1 Access control policy	Yes			ISMS.1 Sicherheitsmanagement	Untreated
Requirement: ISMS.1.R11 Aufrechterhaltung der Informationssicherheit (S) 1							
Requirement: ISMS.1.R12 Management-Berichte zur Informationssicherheit (Institutionsleitung) (S) 1							
Requirement: ISMS.1.R13 Dokumentation des Sicherheitsprozesses (S) 1							
<input type="checkbox"/>	Recplast	ISMS.1.C13 Dokumentation des Sicherheitsprozesses (S)	Untreated			ISMS.1 Sicherheitsmanagement	Untreated
Requirement: ISMS.1.R15 Wirtschaftlicher Einsatz von Ressourcen für Informationssicherheit (S) 1							

### 1.3. Multi-Concepts Dashboards

Multi-Concepts Dashboard allows users to analyze and compare data from many Concepts at once. This feature provides compliance managers with the overview and enhanced visibility over compliance state across the silos and quickly gain insights into the most important data across Concepts, processes, or projects.

Widgets	Description
<ul style="list-style-type: none"> <li>Compliance per Assets</li> <li>Tasks Status</li> <li>Task Overdue Data</li> </ul>	<ul style="list-style-type: none"> <li>Shows Assets status of selected types in context of a Standard from Compliance Check;</li> <li>Shows the realization status of tasks created under requirements, Controls and Threats;</li> <li>Shows how many days the actual tasks are overdue.</li> </ul>



## 1.4. PIA Report

This report is applicable for the Assets of Privacy Impact Assessment (PIA) type. The PIA report shows defined potential privacy risks and develops risk mitigation strategies to address these privacy impacts. It can help to reassess, update, and manage the privacy risks and challenges as they evolve.

The PIA report contains Threshold Assessment, Risk Matrix, Risk Mitigation Solutions, and Compliance assessment sections.



### Privacy Impact Assessment

15.10.2021 10:33

Datenschutz Masterkonzept.zip 2021-10-06 11:04, version 2 (working)

Asset Set: Standardscope EU-DSGVO

Asset: Beispiel Personalverwaltung

#### Threshold Assessment

#### Datenschutz-Folgenabschätzung

Datum der Erfassung:	2021/04/10
Bearbeiter:	Max Muster (Fachbereichsmitarbeiter)
Datum der Überprüfung	2021/05/12
Prüfer	
Datenschutzbeauftragter	Tom Datenschutz (Berater)
Freigabe der DSFA	
Stellungnahme zur Freigabe	
<b>ÜBERBLICK: Dieser Teil ermöglicht es Ihnen, den Gegenstand der Untersuchung zu identifizieren und zu beschreiben</b>	
Welche Verarbeitung ist geplant?	<p>Unter die Verarbeitungstätigkeit fallen:</p> <ul style="list-style-type: none"> <li>a) HR-Kernfunktionen: In diesem Bereich werden die Personalstammdaten verarbeitet, also z.B. relevante Kontaktdaten, Finanzdaten, Arbeitsverträge usw.</li> <li>b) HR-Gehaltsabrechnung: Zusammensetzung des Arbeitsentgelts (Grundgehalt, Zuschläge, Abschläge, Zulagen usw.) wird monatlich je Personalfall ermittelt.</li> <li>c) Zeit- und Anwesenheitsmanagement: Verarbeitung der Arbeitszeiten, Urlaube, Dienstbefreiungen usw.</li> <li>d) Personalplanung und -analyse: Simulation der Personalkosten und Personalbedarfe für die Zukunft.</li> <li>e) Organisationsmanagement: Verwaltung aller Dienststellen/Ämter und ihrer Hierarchiestrukturen sowie Zuordnung der Beschäftigten über das Stellenmanagement zu den einzelnen Organisationseinheiten.</li> </ul>
Welche Zuständigkeiten bestehen für die Verarbeitung?	<p>Stadt Fiktivia, Musterstraße 1, 85346 Musterhausen = Verantwortliche Stelle Personalamt = Verantwortliche Organisationseinheit</p> <p>Bossen, Karin [Auftraggeberin] Mustermann, Franz [Federführung Erstellung]</p>

1 of 14

## 2. Other improvements

---

### 2.1. LDAPS Support

In addition to classic LDAP protocol, SCM now supports enhanced and more secure LDAPS protocol for communication with LDAP directories such as Microsoft Active Directory.